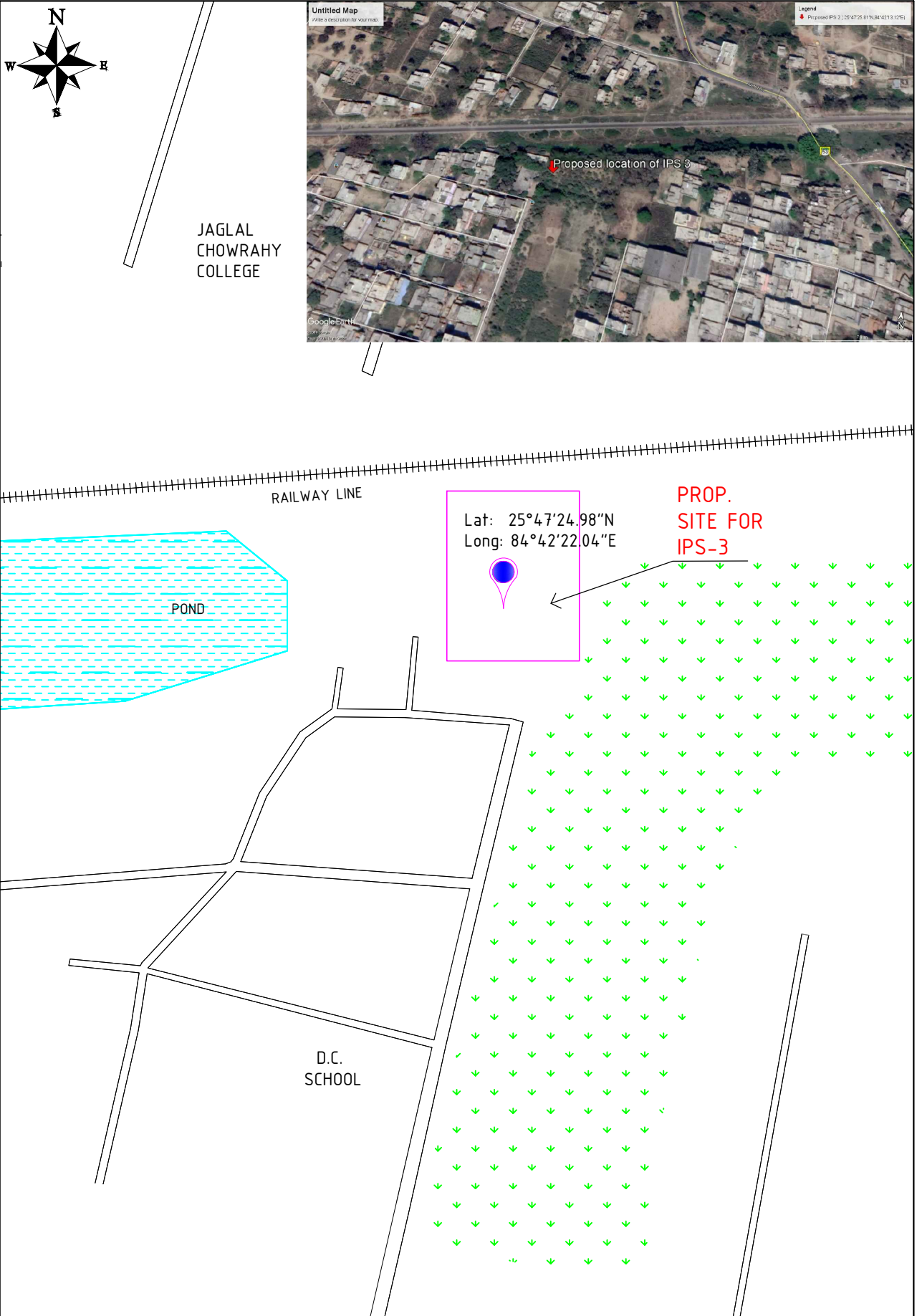



Final DPR-Interception & Diversion-Chhapra

D:\Projects\H.505084 IN_ Chhapra BUIDCo\Site Plan of IPS_ Chhapra

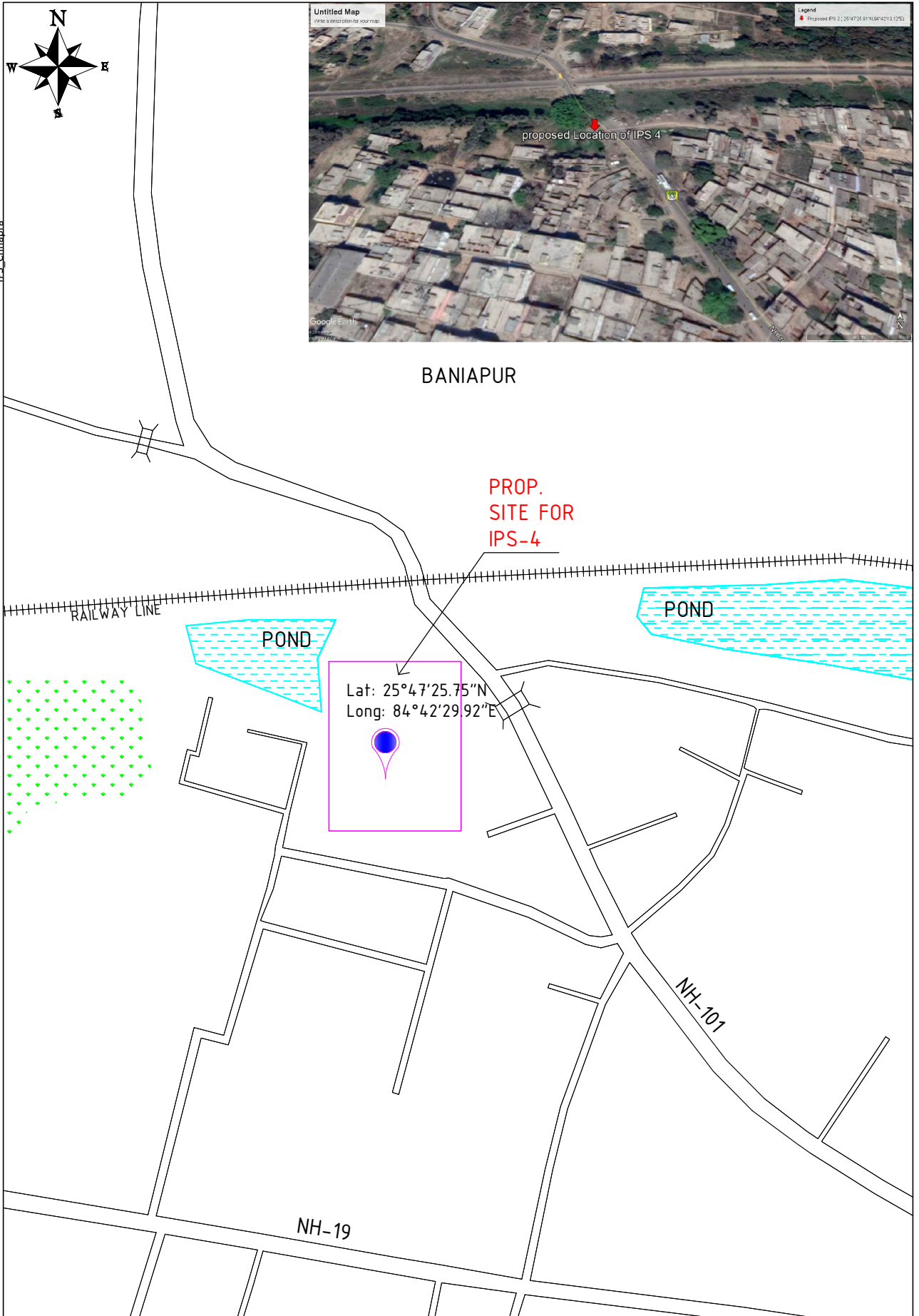


The reproduction, distribution and utilization of this document as well as the communication of its contents to others, without express authorization is prohibited. Offenders will be held liable for the payment of damages. All rights reserved in the event of the grant of a patent, utility model or design.

PROJECT: Preparation of Detailed Project Report on Sewerage for Chhapra, Bihar Interception and Diversion, Chhapra	CONSULTANT:  GKW Consult GmbH India Branch Office: PS Srijan Corporate Park, Tower 1, 13th Floor, Sector V, Salt Lake Kolkata - 700 091, West Bengal, India Tel : 91 33 40176800/6826, Fax : 91 33 40176827 E-mail : info.gkw_india@gkw-consult.com www.gkw-consult.com	Designed by	Drawn by	Checked by	SUBJECT: PROPOSED SITE PLAN OF IPS-3 (CHHAPRA I&D)	Sheet
		DD.MM.YY	Scale	Sheet		Revision
CLIENT: Bihar Urban Infrastructure Development Corporation Limited (BUIDCO)	68165 Mannheim, Germany	22.08.2018	1:300	A4	Drawing No. 505084-D-31 00-I-018-0	3/12
						0

Final DPR-Interception & Diversion-Chhapra

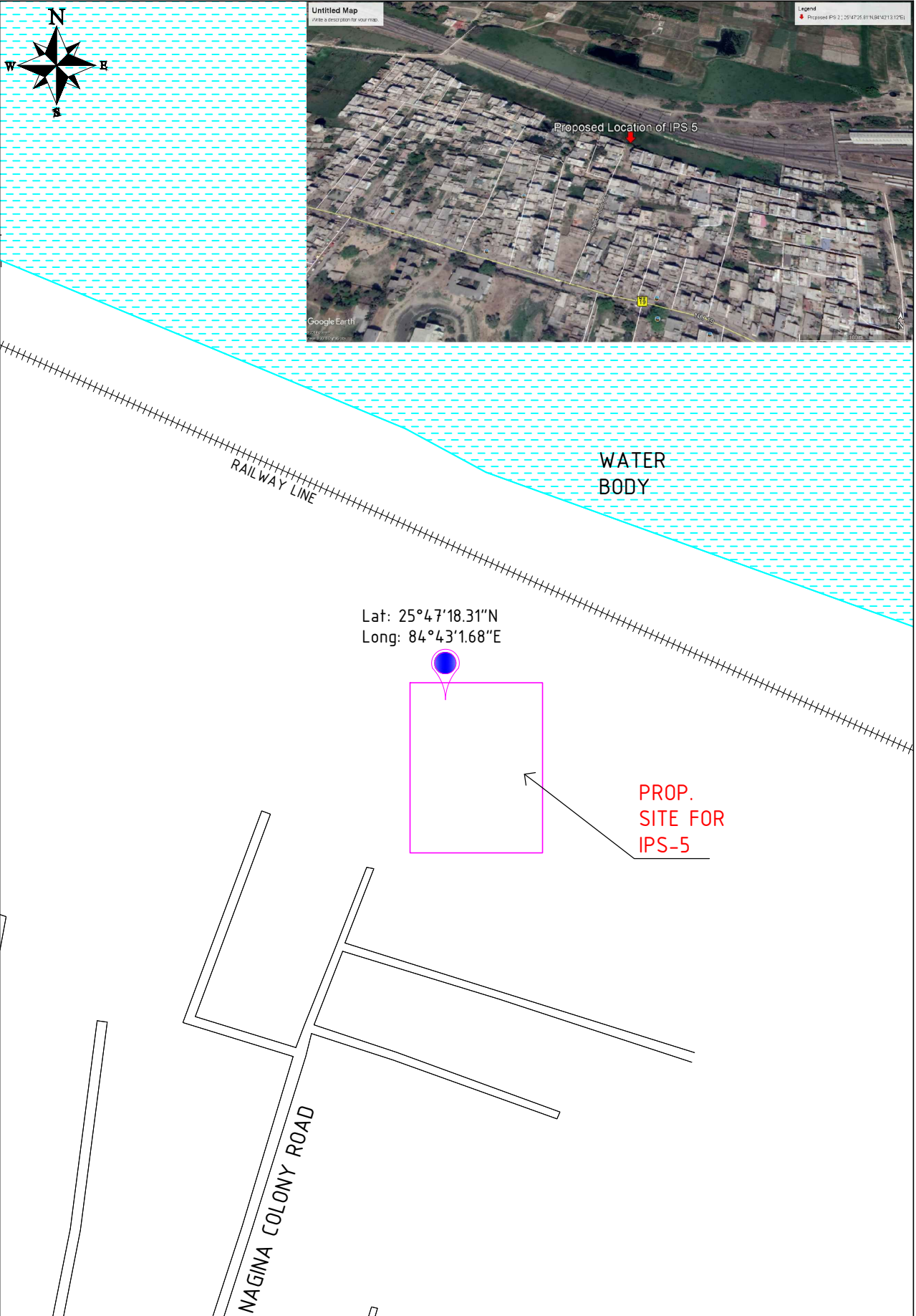
D:\Projects\H.505084 IN_Chhapra BUIDCo\Site Plan of IPS_Chhapra



The reproduction, distribution and utilization of this document as well as the communication of its contents to others without express authorization is prohibited. Offenders will be held liable for the payment of damages. All rights reserved in the event of the grant of a patent, utility model or design.

PROJECT: Preparation of Detailed Project Report on Sewerage for Chhapra, Bihar Interception and Diversion, Chhapra	CONSULTANT:  GKW Consult GmbH India Branch Office: PS Srijan Corporate Park, Tower 1, 13th Floor, Sector V, Salt Lake Kolkata - 700 091, West Bengal, India Tel : 91 33 40176800/6826; Fax : 91 33 40176827 E-mail : info.gkw_india@gkw-consult.com www.gkw-consult.com	Designed by	Drawn by	Checked by	SUBJECT: PROPOSED SITE PLAN OF IPS-4 (CHHAPRA I&D)	Sheet 4/12
		DD.MM.YY	Scale	Sheet		Revision 0
CLIENT: Bihar Urban Infrastructure Development Corporation Limited (BUIDCo)	22.08.2018	1:300	A4	Drawing No. 505084-D-31 00-I-018-0		

D:\Projects\H.505084 IN_Chhapra BUIDCo\Site Plan of IPS_Chhapra



The reproduction, distribution and utilization of this document as well as the communication of its contents to others, without express authorization is prohibited. Offenders will be held liable for the payment of damages. All rights reserved in the event of the grant of a patent, utility model or design.

PROJECT: Preparation of Detailed Project Report on Sewerage for Chhapra, Bihar Interception and Diversion, Chhapra
CLIENT: Bihar Urban Infrastructure Development Corporation Limited (BUIDCo)

CONSULTANT:  GKW Consult GmbH India Branch Office: PS Srijan Corporate Park, Tower 1, 13th Floor, Sector V, Salt Lake Kolkata - 700 091, West Bengal, India Tel : 91 33 40176800/6826, Fax : 91 33 40176827 E-mail : info.gkw_india@gkw-consult.com www.gkw-consult.com

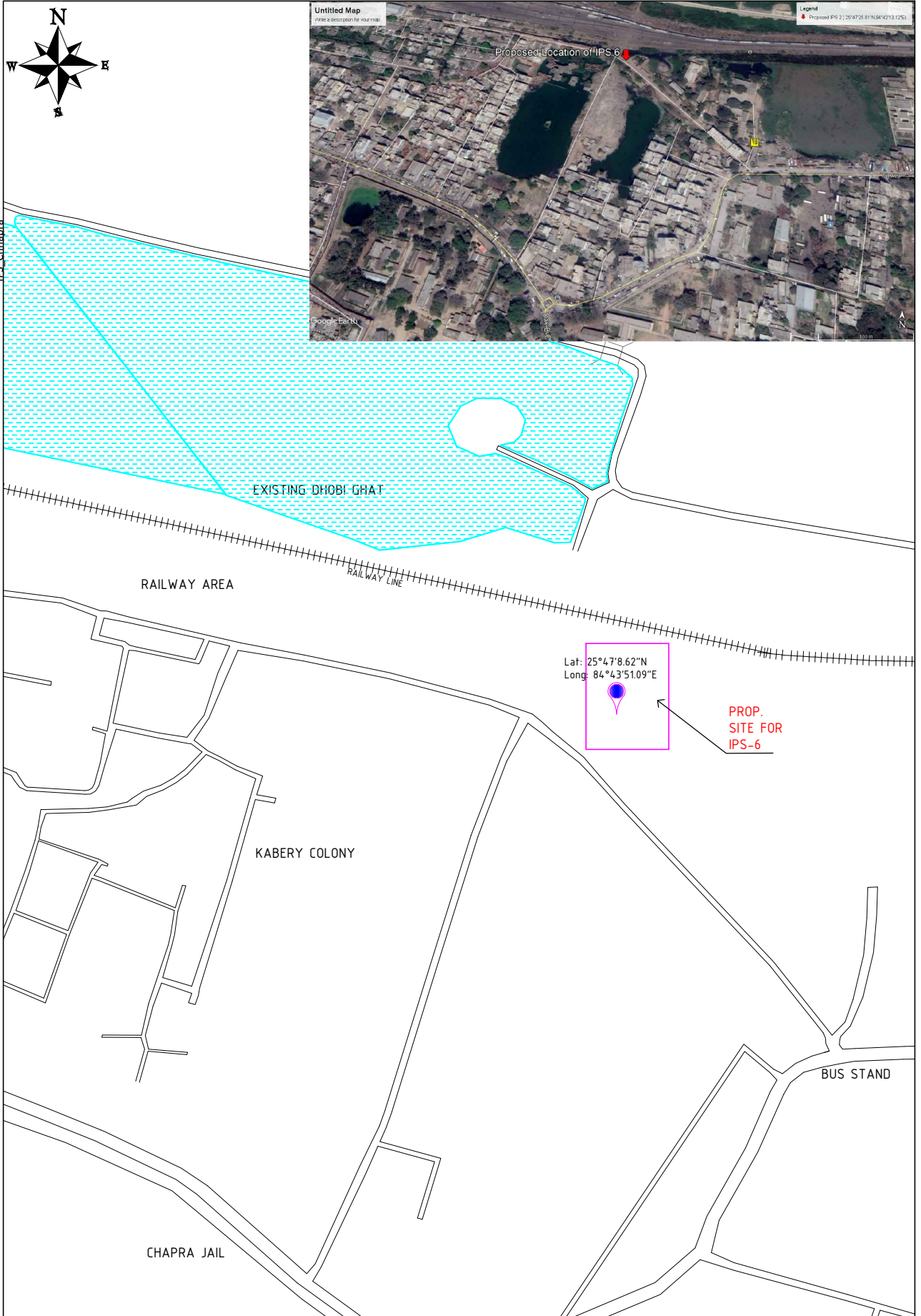
Designed by	Drawn by	Checked by
	K. Mukherjee	D. Dutta
DD.MM.YY	Scale	Sheet
22.08.2018	1:300	A4

SUBJECT: PROPOSED SITE PLAN OF IPS-5 (CHhapra I&D)
Drawing No. 505084-D-31 00-I-018-0

Sheet 5/12
Revision 0

Final DPR-Interception & Diversion-Chhapra

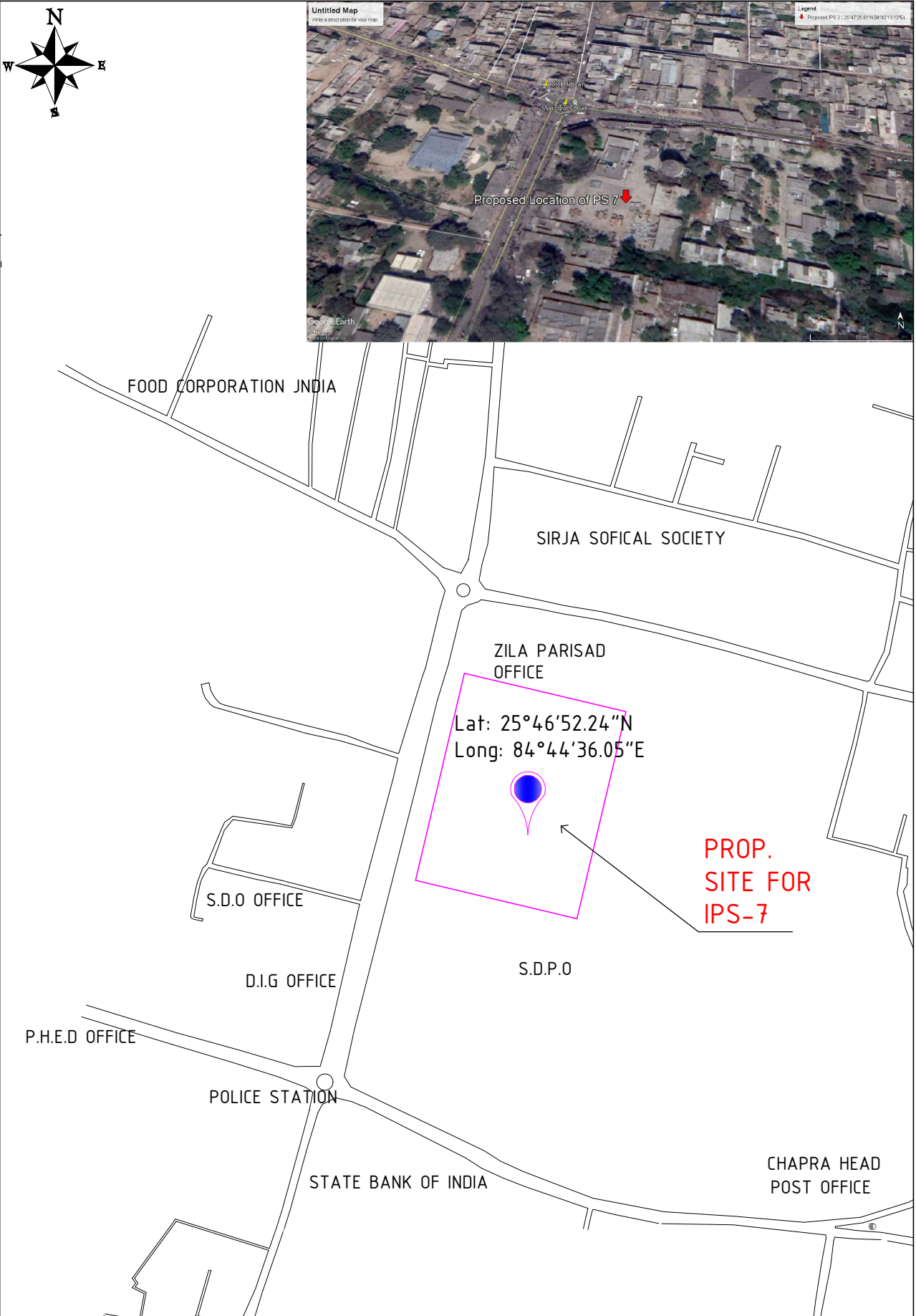
D:\Projects\H.505084 IN_ Chhapra BUIDCo\Site Plan of IPS_ Chhapra



The reproduction, distribution and utilization of this document as well as the communication of its contents to others, without express authorization is prohibited. Offenders will be held liable for the payment of damages. All rights reserved in the event of the grant of a patent, utility model or design.

PROJECT: Preparation of Detailed Project Report on Sewerage for Chhapra, Bihar Interception and Diversion, Chhapra	CONSULTANT:  GKW Consult GmbH India Branch Office: PS Srijan Corporate Park, Tower 1, 13th Floor, Sector V, Salt Lake Kolkata - 700 091, West Bengal, India Tel: +91 33 40176800/6826; Fax: +91 33 40176827 E-mail: info.gkw_india@gkw-consult.com www.gkw-consult.com Auguststraße 67 68165 Mannheim, Germany	Designed by	Drawn by	Checked by	SUBJECT: PROPOSED SITE PLAN OF IPS-6 (CHHAPRA I&D)	Sheet 6/12
		DD.MM.YY	Scale	Sheet		Revision 0
CLIENT: Bihar Urban Infrastructure Development Corporation Limited (BUIDCo)		22.08.2018	1:300	A4	Drawing No. 505084-D-31 00-I-018-0	

D:\Projects\H.505084 IN_Chhapra BUIDCo\Site Plan of IPS_Chhapra

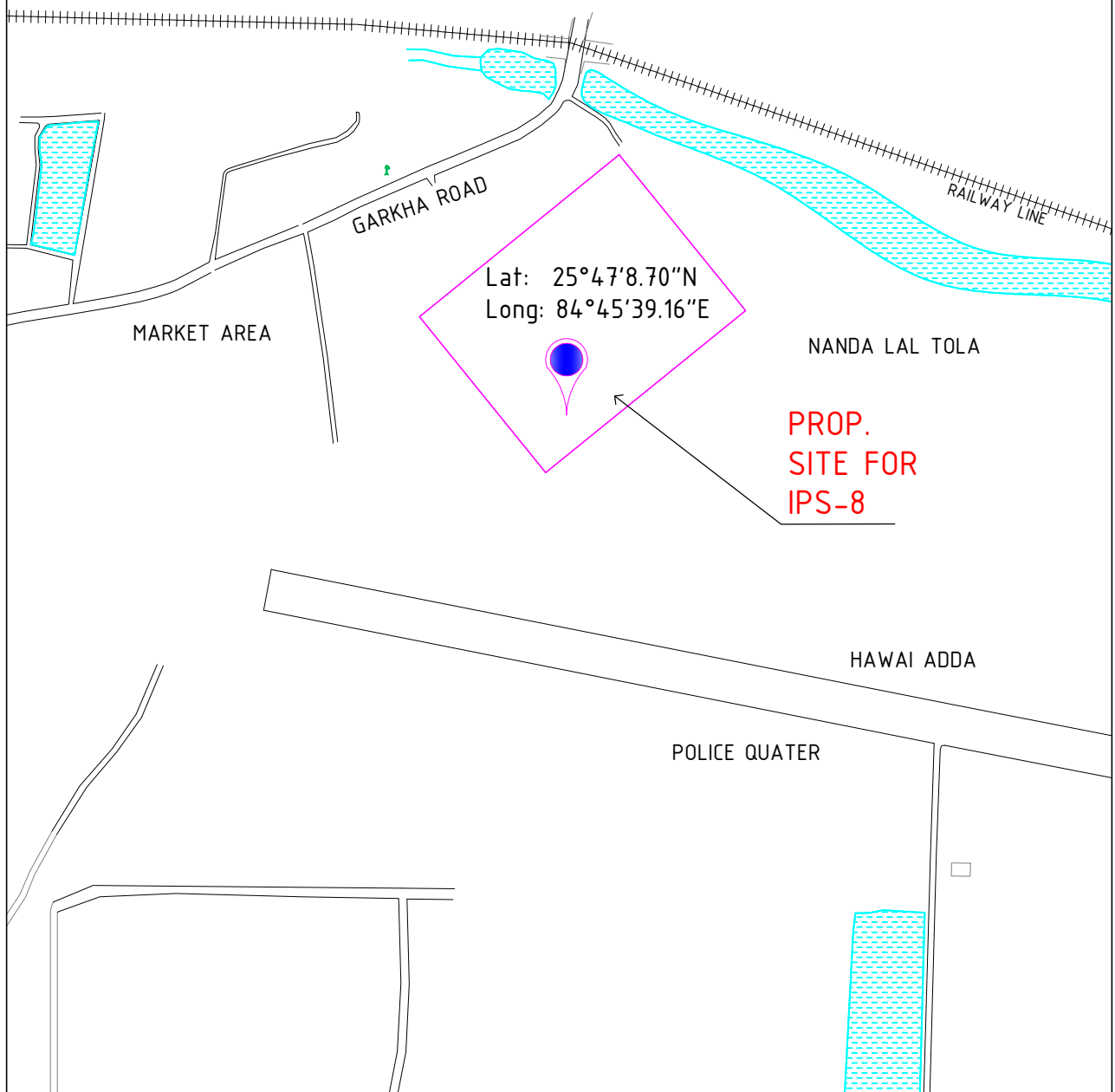
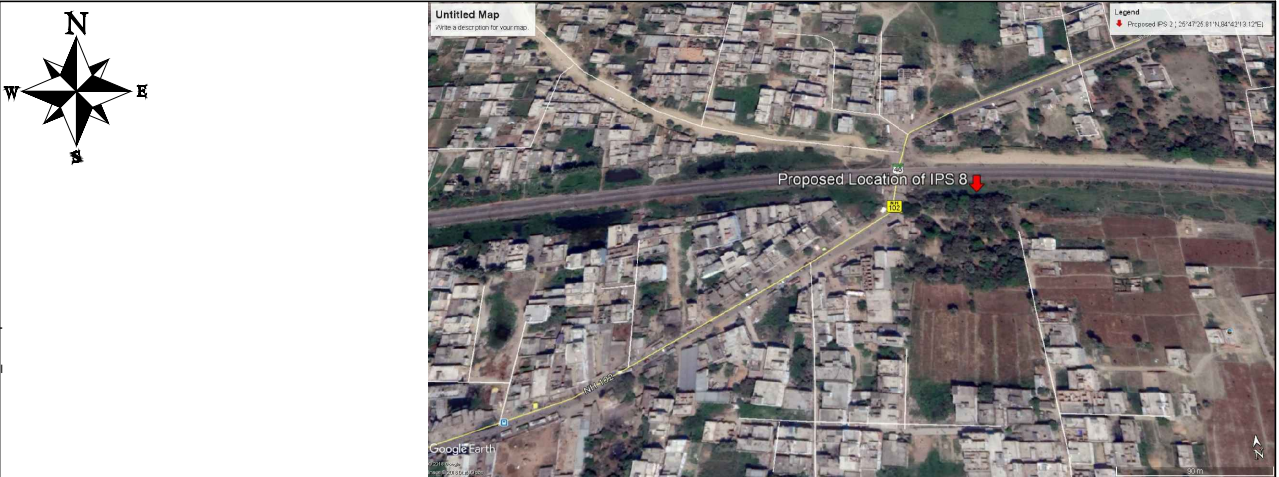


The reproduction, distribution and utilization of this document as well as the communication of its contents to others without express authorization is prohibited. Offenders will be held liable for the payment of damages. All rights reserved in the event of the grant of a patent, utility model or design.

PROJECT: Preparation of Detailed Project Report on Sewerage for Chhapra, Bihar Interception and Diversion, Chhapra	CONSULTANT:  GKW Consult GmbH India Branch Office: PS Sirjan Corporate Park, Tower 1, 13th Floor, Sector V, Salt Lake Kolkata - 700 091, West Bengal, India Tel : 91 33 40176800/6826, Fax : 91 33 40176827 E-mail : info.gkw_india@gkw-consult.com www.gkw-consult.com A subsidiary of the LANXESS GROUP Auguststraße 67 68165 Mannheim, Germany	Designed by	Drawn by	Checked by	SUBJECT: PROPOSED SITE PLAN OF IPS-7 (CHHAPRA I&D)	Sheet 7/12
		DD.MM.YY	Scale	Sheet		Revision 0
CLIENT: Bihar Urban Infrastructure Development Corporation Limited (BUIDCo)		22.08.2018	1:300	A4	Drawing No. 505084-D-31 00-I-018-0	

Final DPR-Interception & Diversion-Chhapra

D:\Projects\H.505084 IN_Chhapra BUIDCo)Site Plan of IPS_Chhapra

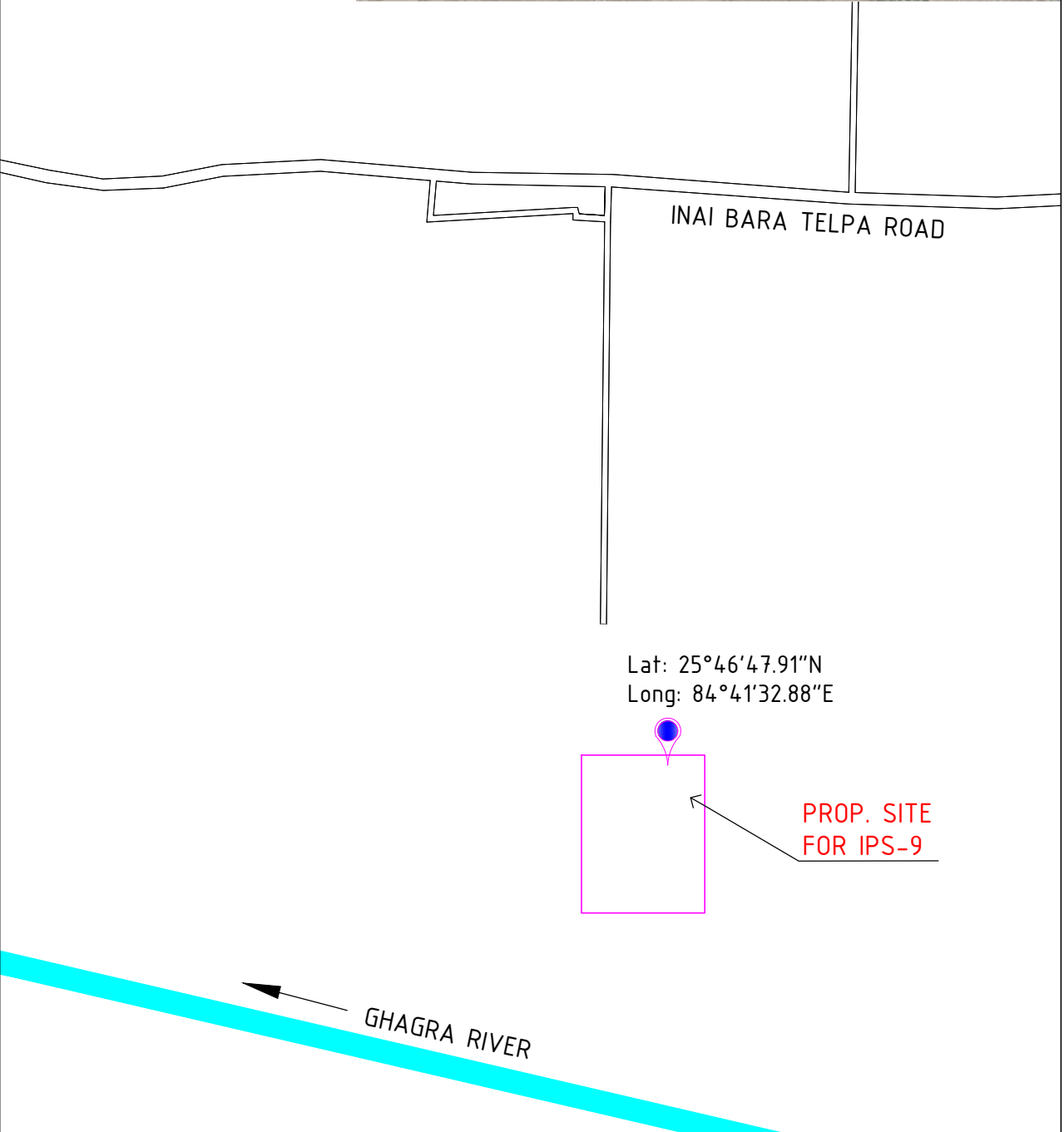


The reproduction, distribution and utilization of this document as well as the communication of its contents to others without express authorization is prohibited. Offenders will be held liable for the payment of damages. All rights reserved in the event of the grant of a patent, utility model or design.

PROJECT: Preparation of Detailed Project Report on Sewerage for Chhapra, Bihar Interception and Diversion, Chhapra	CONSULTANT:  GKW Consult GmbH India Branch Office: PS Srijan Corporate Park, Tower 1, 13th Floor, Sector V, Salt Lake Kolkata - 700 091, West Bengal, India Tel : 91 33 40176800/6826; Fax : 91 33 40176827 E-mail : info.gkw_india@gkw-consult.com www.gkw-consult.com	Designed by	Drawn by	Checked by	SUBJECT: PROPOSED SITE PLAN OF IPS-8 (CHHAPRA I&D)	Sheet 8/12
		DD.MM.YY	Scale	Sheet		Revision 0
CLIENT: Bihar Urban Infrastructure Development Corporation Limited (BUIDCO)	22.08.2018	1:300	A4	Drawing No. 505084-D-31 00-I-018-0		

Final DPR-Interception & Diversion-Chhapra

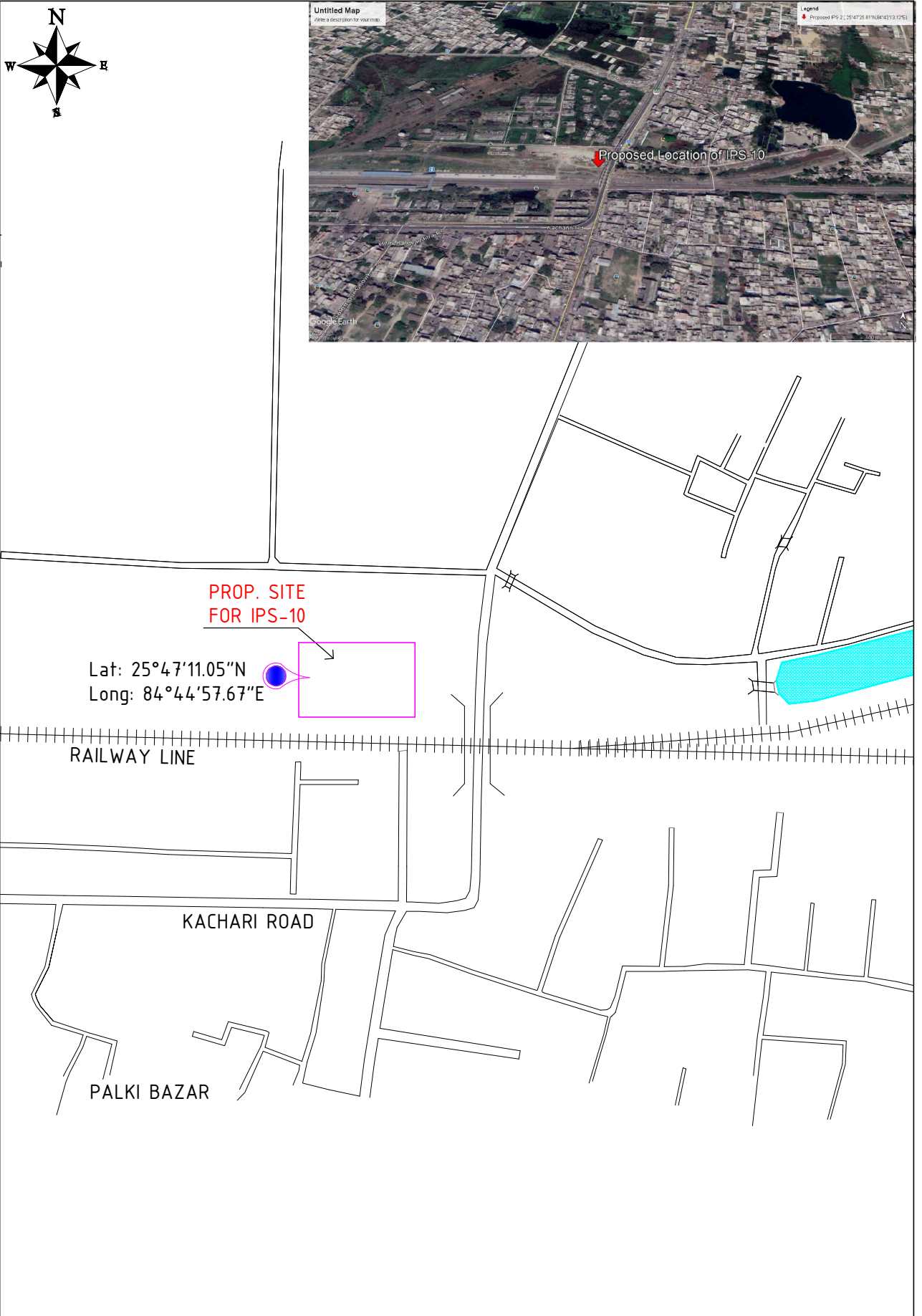
D:\Projects\H.505084 IN_Chhapra BUIDCo\Site Plan of IPS_Chhapra



The reproduction, distribution and utilization of this document as well as the communication of its contents to others without express authorization is prohibited. Offenders will be held liable for the payment of damages. All rights reserved in the event of the grant of a patent, utility model or design.

PROJECT: Preparation of Detailed Project Report on Sewerage for Chhapra, Bihar Interception and Diversion, Chhapra	CONSULTANT:  GKW Consult GmbH India Branch Office: PS Srijan Corporate Park, Tower 1, 13th Floor, Sector V, Salt Lake Kolkata - 700 091, West Bengal, India Tel: +91 33 40176800/6826, Fax: +91 33 40176827 E-mail: info.gkw_india@gkw-consult.com www.gkw-consult.com	Designed by	Drawn by	Checked by	SUBJECT: PROPOSED SITE PLAN OF IPS-9 (CHHAPRA I&D)	Sheet 9/12
		DD.MM.YY	Scale	Sheet		Revision 0
CLIENT: Bihar Urban Infrastructure Development Corporation Limited (BUIDCo)	22.08.2018	1:300	A4	Drawing No. 505084-D-31 00-I-018-0		

D:\Projects\H.505084 IN_Chhapra BUIDCo\Site Plan of IPS_Chhapra

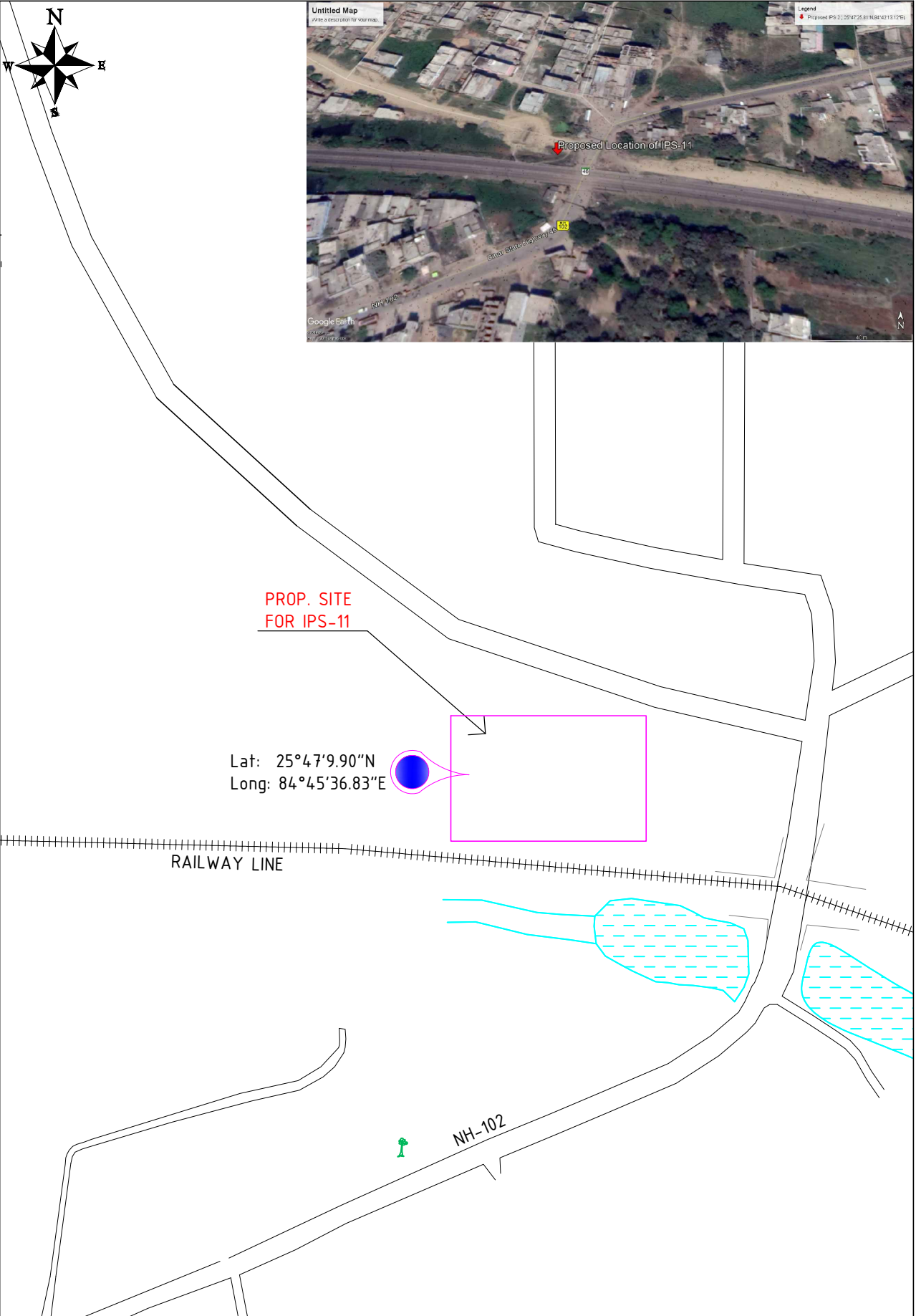


The reproduction, distribution and utilization of this document as well as the communication of its contents to others without express authorization is prohibited. Offenders will be held liable for the payment of damages. All rights reserved in the event of the grant of a patent, utility model or design.

PROJECT: Preparation of Detailed Project Report on Sewerage for Chhapra, Bihar Interception and Diversion, Chhapra	CONSULTANT:  GKW Consult GmbH India Branch Office: PS Srijan Corporate Park, Tower 1, 13th Floor, Sector V, Salt Lake Kolkata - 700 091, West Bengal, India Tel: +91 33 40176800/6826, Fax: +91 33 40176827 E-mail: info.gkw_india@gkw-consult.com www.gkw-consult.com <small>AUGUSTINUS & CO. GROUP</small> 68165 Mannheim, Germany	Designed by	Drawn by	Checked by	SUBJECT: PROPOSED SITE PLAN OF IPS-10 (CHHAPRA I&D)	Sheet 10/12
		DD.MM.YY	Scale	Sheet		K. Mukherjee D. Dutta
CLIENT: Bihar Urban Infrastructure Development Corporation Limited (BUIDCO)		22.08.2018	1:300	A4	Drawing No. 505084-D-31 00-I-018-0	

Final DPR-Interception & Diversion-Chhapra

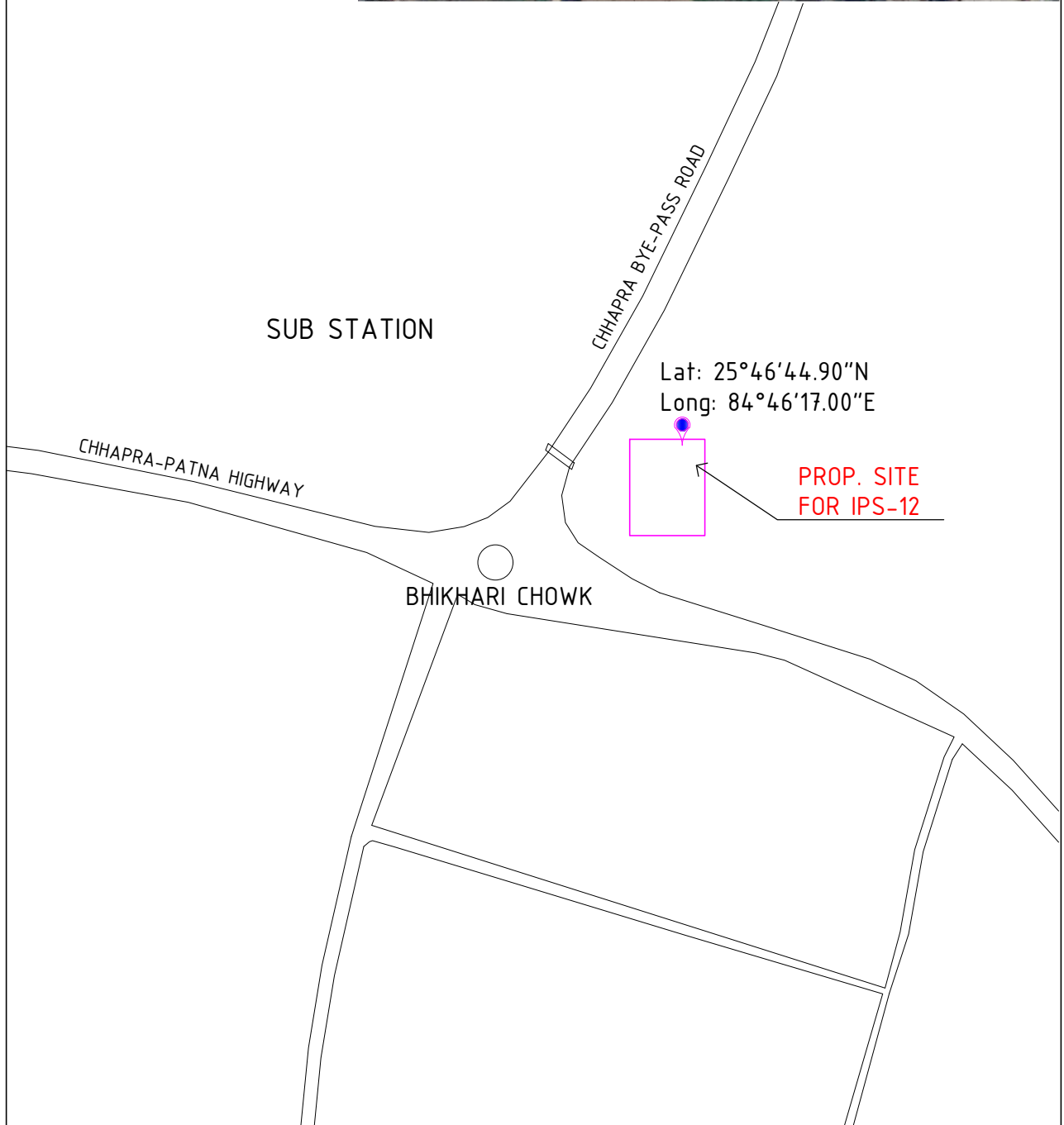
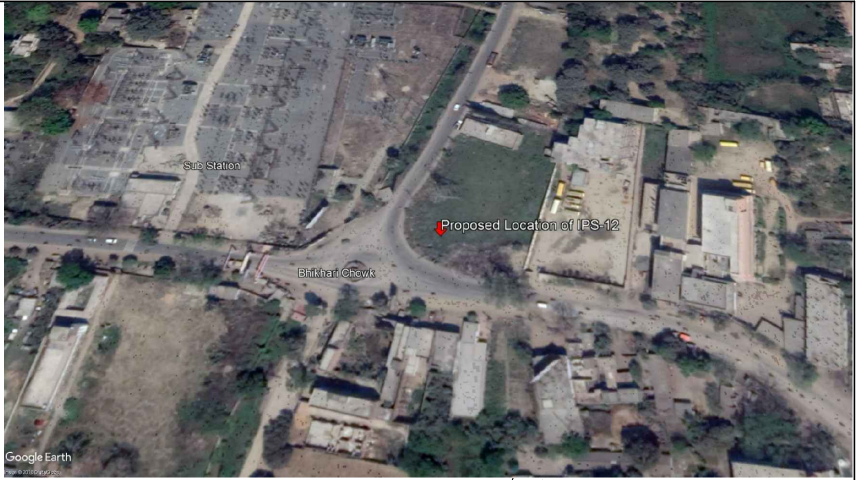
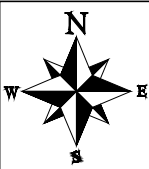
D:\Projects\H.505084 IN_Chhapra BUIDCo\Site Plan of IPS_Chhapra



The reproduction, distribution and utilization of this document as well as the communication of its contents to others without express authorization is prohibited. Offenders will be held liable for the payment of damages. All rights reserved in the event of the grant of a patent, utility model or design.

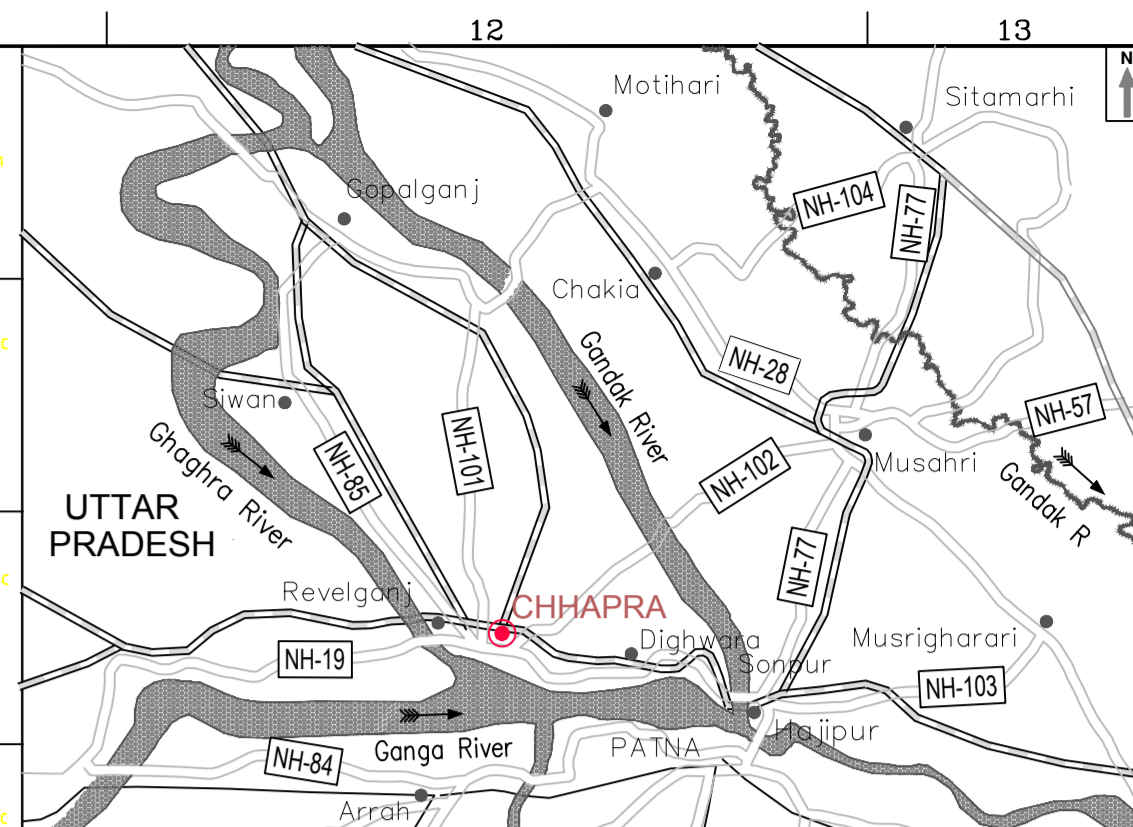
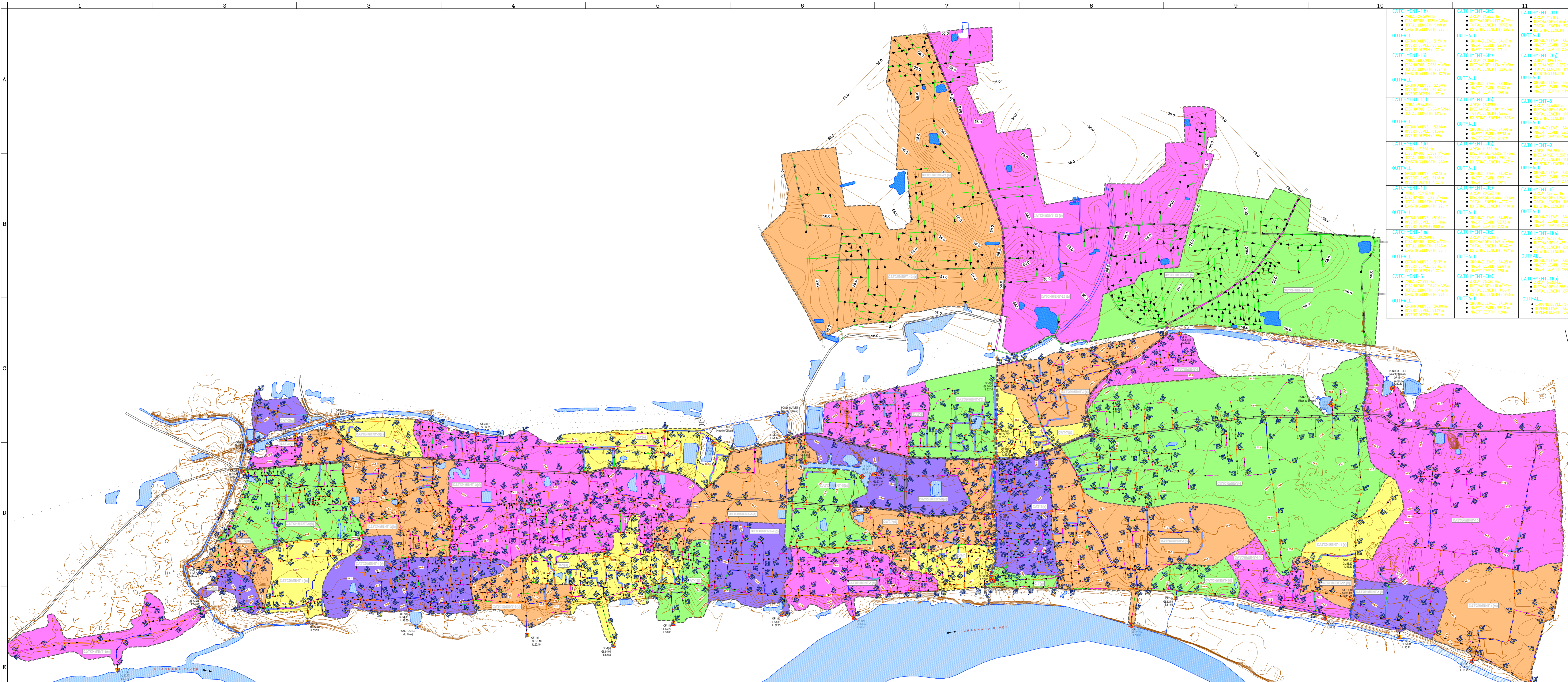
PROJECT: Preparation of Detailed Project Report on Sewerage for Chhapra, Bihar Interception and Diversion, Chhapra	CONSULTANT:  GKW Consult GmbH India Branch Office: PS Srijan Corporate Park, Tower 1, 13th Floor, Sector V, Salt Lake Kolkata - 700 091, West Bengal, India Tel : 91 33 40176800/6826, Fax : 91 33 40176827 E-mail : info.gkw_india@gkw-consult.com www.gkw-consult.com <small>AUGUSTINUS & PARTNERS GROUP Augustinstraße 67 68165 Mannheim, Germany</small>	Designed by	Drawn by	Checked by	SUBJECT: PROPOSED SITE PLAN OF IPS-11 (CHHAPRA I&D)	Sheet
		DD.MM.YY	Scale	Sheet		11/12
CLIENT: Bihar Urban Infrastructure Development Corporation Limited (BUIDCO)		22.08.2018	1:300	A4	Drawing No. 505084-D-31 00-I-018-0	Revision
						0

D:\Projects\H.505084 IN_ Chhapra BUIDCo\Site Plan of IPS_Chhapra



The reproduction, distribution and utilization of this document as well as the communication of its contents to others without express authorization is prohibited. Offenders will be held liable for the payment of damages. All rights reserved in the event of the grant of a patent, utility model or design.

PROJECT: Preparation of Detailed Project Report on Sewerage for Chhapra, Bihar Interception and Diversion, Chhapra	CONSULTANT:  GKW Consult GmbH India Branch Office: PS Srijan Corporate Park, Tower 1, 13th Floor Sector V, Salt Lake Kolkata - 700 091, West Bengal, India Tel : 91 33 40176800/6826, Fax : 91 33 40176827 E-mail : info.gkw_india@gkw-consult.com www.gkw-consult.com	Designed by	Drawn by	Checked by	SUBJECT: PROPOSED SITE PLAN OF IPS-12 (CHHAPRA I&D)	Sheet 12/12
		DD.MM.YY	Scale	Sheet		Revision 0
CLIENT: Bihar Urban Infrastructure Development Corporation Limited (BUIDCO)	22.08.2018	1:300	A4	Drawing No. 505084-D-31 00-I-018-0		

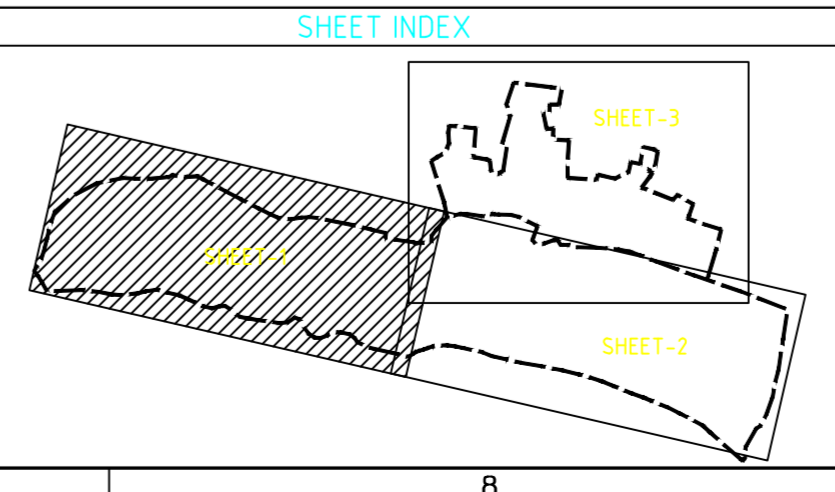
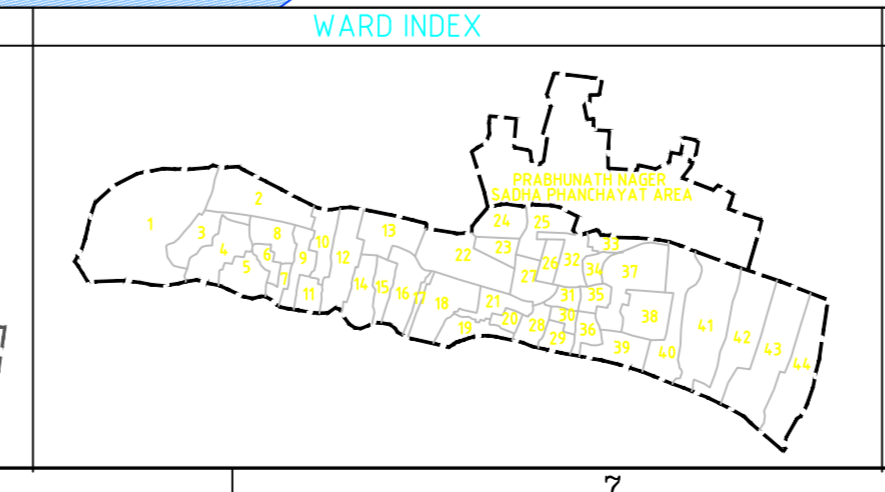
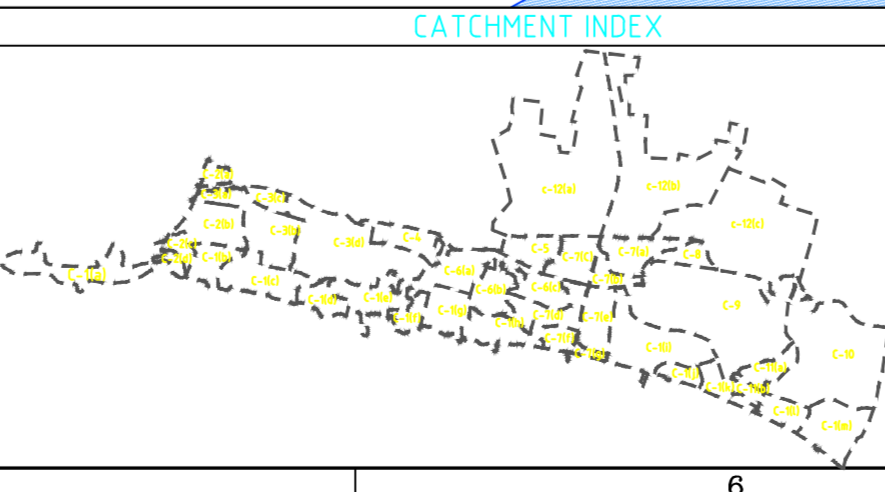


Catchment No.	Area (Ha)	Discharge (m ³ /Sec)	Total Length (m)	Ground Level (m)	Invert Level (m)	Invert Depth (m)
CATCHMENT-101	19.94	0.99	395	52.37	52.37	0.00
CATCHMENT-102	21.45	1.07	429	52.37	52.37	0.00
CATCHMENT-103	11.94	0.59	298	52.37	52.37	0.00
CATCHMENT-104	21.45	1.07	429	52.37	52.37	0.00
CATCHMENT-105	11.94	0.59	298	52.37	52.37	0.00
CATCHMENT-106	21.45	1.07	429	52.37	52.37	0.00
CATCHMENT-107	11.94	0.59	298	52.37	52.37	0.00
CATCHMENT-108	21.45	1.07	429	52.37	52.37	0.00
CATCHMENT-109	11.94	0.59	298	52.37	52.37	0.00
CATCHMENT-110	21.45	1.07	429	52.37	52.37	0.00
CATCHMENT-111	11.94	0.59	298	52.37	52.37	0.00
CATCHMENT-112	21.45	1.07	429	52.37	52.37	0.00
CATCHMENT-113	11.94	0.59	298	52.37	52.37	0.00
CATCHMENT-114	21.45	1.07	429	52.37	52.37	0.00
CATCHMENT-115	11.94	0.59	298	52.37	52.37	0.00
CATCHMENT-116	21.45	1.07	429	52.37	52.37	0.00
CATCHMENT-117	11.94	0.59	298	52.37	52.37	0.00
CATCHMENT-118	21.45	1.07	429	52.37	52.37	0.00
CATCHMENT-119	11.94	0.59	298	52.37	52.37	0.00
CATCHMENT-120	21.45	1.07	429	52.37	52.37	0.00

LEGEND	DESCRIPTION	PROPOSED	PHASE-I WIDTH OF CHANNEL	COLOR	PHASE-II WIDTH OF CHANNEL	COLOR
NODE			300		300	
OUTFALL			450		450	
CATCHMENT BOUNDARY			600		600	
EXISTING CHANNEL			800		800	
BRIDGE/CULVERT			1000		1000	
INTERSECTION FOR TWIN CHANNEL			1200		1200	
POND/OUTLET						
STREAM/WALK						

ABBREVIATIONS	NOTE
m - METRE	1. ALL LEVELS ARE IN METRES, UNLESS OTHERWISE SPECIFIED.
mm - MILLIMETRE	2. ROAD SIDE R/C CHANNEL OF RECTANGULAR SHAPE AND PREFABRICATED COVER SLAB IS PROPOSED WITH MINIMUM CROSS SECTION 0.30x0.3m.
OF - OUTFALL	3. S/LT TRAP AND INTERCONNECTION BETWEEN TWIN CHANNEL IS PROPOSED AT S/TABLE INTERVALS.
Ha - HECTARE	
GL - GROUND LEVEL	
IL - INVERT LEVEL	

ROAD LENGTH FOR DISMANTLING	
TYPE OF ROAD	LENGTH (m)
CC ROAD	5769
ASPHALT ROAD	34571
TOTAL	40340



PROPOSED SEWERAGE SYSTEM	PHASE I	PHASE II	TOTAL
(a) Sags Area Covered (sq. Km)	3.51	32.68	36.19
(b) Catchments (Nos)	35	38 Nos	73
(c) Proposed length of Drain (km)	38.37	176.65	215.02
(d) No. of Disposal points with Name (Nos)	38 Nos	38 Nos	76

BIDCO
Bihar Infrastructure Development Corporation Ltd.

BHAR URBAN INFRASTRUCTURE DEVELOPMENT CORPORATION LTD.
(A Government of Bihar Undertaking)
PATNA-81

TOWN/VILL CHHAPRA

TITLE SEWER CHANNEL FOR INTERCEPTION AND DIVERSION FOR CHHAPRA TOWN LAYOUT PLAN FOR PRABHUNATHI NAGER UNDER SADHA PHANCHAYAT AREA

DRAWING No. _____ **REV.** 0

Approved _____ Checked _____ Designed _____ Drawn _____

Scale 1:9000 Season SEP 2016 Status _____